

■ Questions about BHE\_model

I use a demo version of FEFLOW (limited numbers of mesh is 500)  
So, I was modeling a simple case

index	image
1	

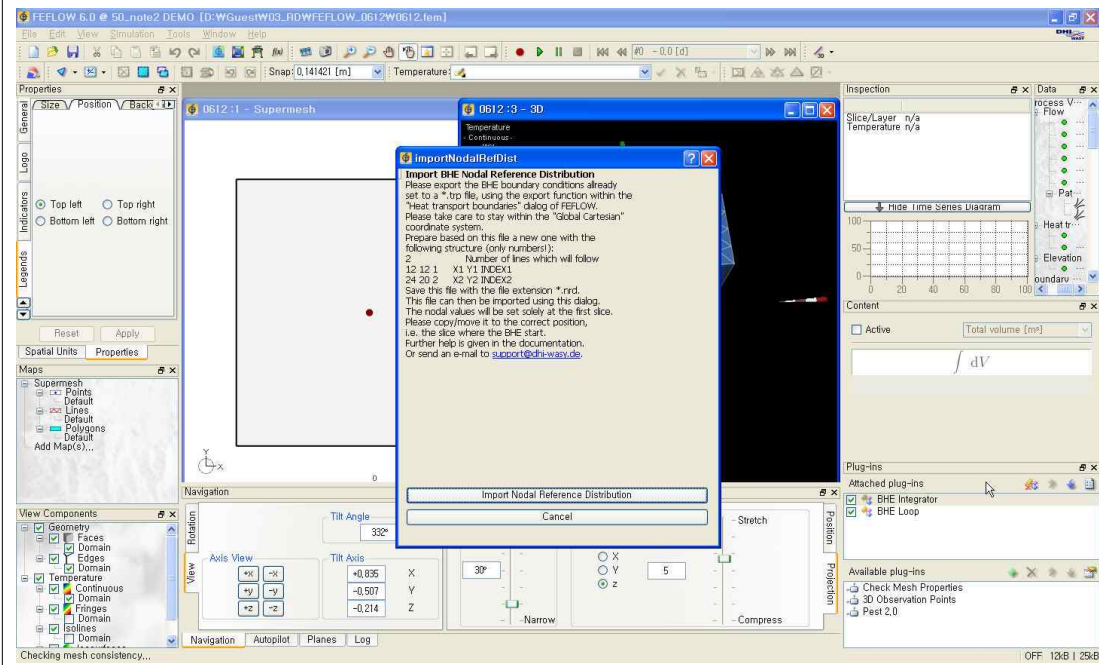
Should I use another method for mesh?  
Attached plug-ins "BHE\_Integrator" "BHE\_Loop"  
Do I need other "plug-ins"?

index	image
2	

index

image

3

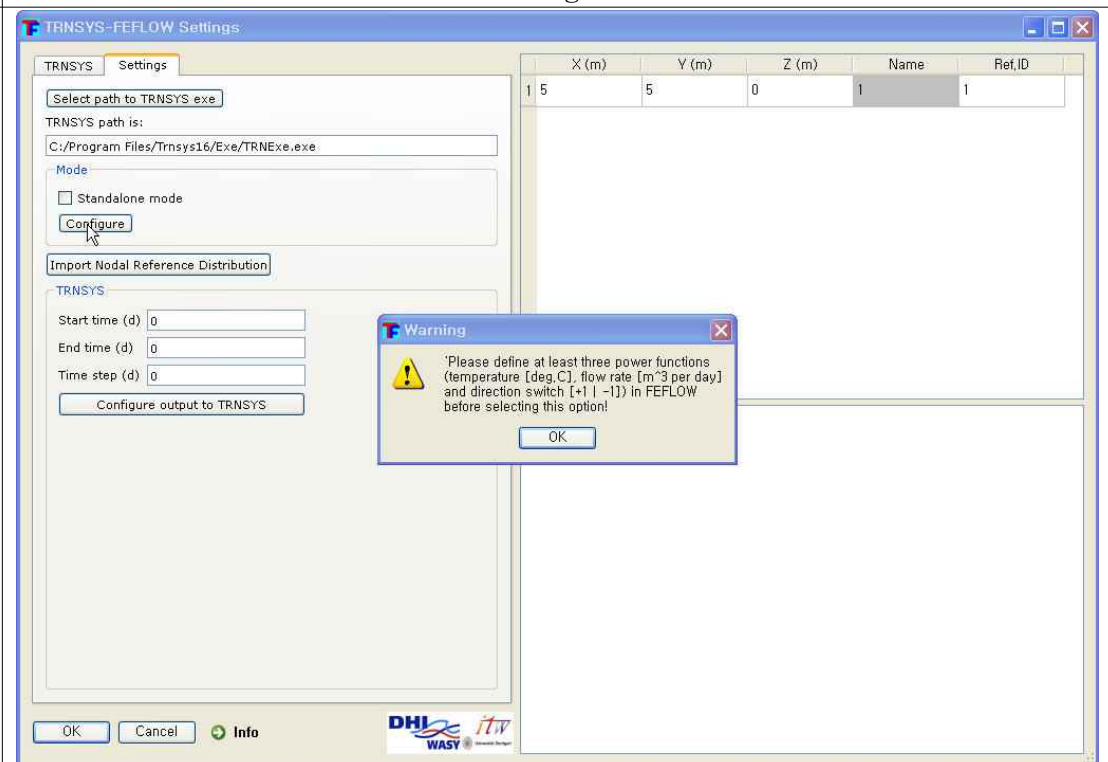


I make the ".nrd file"

index

image

24



How can I solve these errors?